



TTP 100
TUBULAR

Datasheet



LED

Norms: EN 60598-1, EN 60598-2-1



PRODUCT DESCRIPTION

Areas of Application: Industrial areas, public spaces, maintenance areas, public transport areas and parking lots.

Mounting: Surface/Suspended/Wall Mounted.

Light Distribution: Direct.

Light Source: LED 4000K, RG1, CRI>80, MacAdam Step<3, 80.000h lifetime (@L90, B10, Ta 25°C).

Optical System: Diffuser: Polycarbonate.

Control Gear: LED driver, 220-240VAC-50/60Hz.


Wiring: 1,5 m H07RN-F cable and plastic cable gland.

Materials: Body: Polycarbonate tube.
End caps: Matt aluminium.


Surface Finish: White matt extruded aluminium profile.

Fixing system: Clamps(not included).

TUP - Transparent polycarbonate diffuser

LED	W	Lm Output	Lm/W	A(mm)	K3	kg	HF	DALI
	23	3648	159	660	-	2,0	90481.L060.E	90481.L060.H
	34	5244	154	940	-	2,4	90481.L090.E	90481.L090.H
	44	6992	159	1220	•	2,9	90481.L120.E	90481.L120.H
	79	12232	155	1500	•	3,4	90496.L150.E	90496.L150.H
	99	14670	148	1500	-	3,6	90479.L150.E	90479.L150.H

TOP - Opal polycarbonate diffuser

LED	W	Lm Output	Lm/W	A(mm)	K3	kg	HF	DALI
	23	3078	134	660	-	2,0	90480.L060.E	90480.L060.H
	34	4617	136	940	-	2,4	90480.L090.E	90480.L090.H
	44	6232	142	1220	•	2,9	90480.L120.E	90480.L120.H
	79	10981	139	1500	•	3,4	90495.L150.E	90495.L150.H
	99	13040	132	1500	-	3,6	90478.L150.E	90478.L150.H

Order example: 90495.L150.E (HF) + 3000 + 971600 + 915504 + 925000 (OPTIONS)

We reserve the right to make technical changes without prior notice.
Electrical/Optical data are subjected to a tolerance of +/-10%.



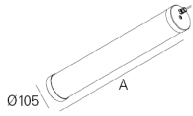


TTP 100 TUBULAR

Datasheet

DIMENSIONS

ALUMINIUM END CAPS VERSION



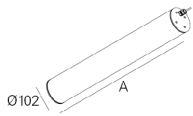
Recessed ceiling rose T5 D90



Surface mounted ceiling rose T4 D90



STAINLESS STEEL END CAPS VERSION



Stainless steel clamp A1 D100



Stainless steel clamp A2 D100



Stainless steel clamp D100 with fast lock



OPTIONS

Colour temperature



3000K
Tunable White

Order code
3000
T000

SwitchDIM Tunable White



SwitchDIM Tunable White.

Order code
926600

• Each SwitchDIM Tunable White can control up to 20 luminaires.
But, in the 1500mm version, it can control only up to 10 luminaires.

Ceiling rose



Ceiling rose (IP20)
Surface mounted T4 D90
White
Black
Grey
Recessed T5 D90
White
Black
Grey

Order code
971600
971601
971602
971300
971301
971302

Stainless steel end caps



Stainless steel end caps IP68 (2x)

Order code
INOX

We reserve the right to make technical changes without prior notice.
Electrical/Optical data are subjected to a tolerance of +/-10%.





TTP 100 TUBULAR

Datasheet

Clamps



Stainless steel clamp A1 D100 (2x)	Order code	915503
Stainless steel clamp A2 D100 (2x)		915505
Stainless steel clamp D100 with fast lock (2x)		915504

Suspension



Suspension S4 1500mm (2x)	Order code	910200
---------------------------	------------	---------------

Emergency unit



Emergency unit 3 hours	Order code	K3
------------------------	------------	-----------

•Only available in ON/OFF (HF) version and with self-test.

Presence sensor



Presence sensor	Order code	SENSOR
-----------------	------------	---------------

Detection range:100 %
Hold time:5 s
Daylight Threshold: disable

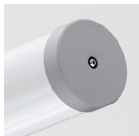
•For other types of programming, consult the sensor's instructions manual.
Note:A luminaire with sensor has 105 mm more than the standard length.

Metal cable gland

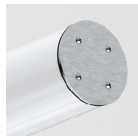


Metal cable gland	Order code	925000
Breathable metal cable gland		926700

DETAILS



Matt aluminium end caps



Stainless steel end caps



Plastic cable gland



Metal cable gland



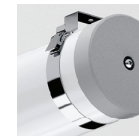
Breathable metal cable gland



Stainless steel clamp A1 D100

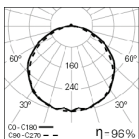


Stainless steel clamp A2 D100

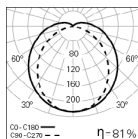


Stainless steel clamp D100 with fast lock

PHOTOMETRY



TTP 100 L0660
TUP 4000K LO



TTP 100 L0660
TOP 4000K LO

TO SPECIFY:

Tubular LED luminaire, IP68/IK10, for ceiling surface mounted or suspended, and wall mounted application. Made of 105mm transparent or opal polycarbonate tube, with inner aluminium profile and matt aluminium end caps. Standard version with 4000K LED, RG1 (Risk Group 1 for photobiological safety, according to IEC 62471), CRI>80, MacAdam Step<3 and 80.000h lifetime (@ L90, B10, Ta 25 °C). Pre-wired with 1,5 m H07RN-F cable and plastic cable gland. Optional in 3000K, Tunable White, dimmable DALI driver, presence sensor and 3 hours emergency unit with self-test. Available as option with suspension S4, stainless steel end caps, three types of fixing clamps (stainless steel A1 D100, stainless steel A2 D100 and stainless steel D100 with fast locks) and with two types of cable glands (metal cable gland or breathable metal cable gland). Possible to include recessed T5 D90 or surface mounted T4 D90 round ceiling roses. - as Roxo Lighting TTP 100.

We reserve the right to make technical changes without prior notice.
Electrical/Optical data are subjected to a tolerance of +/-10%.

