



Because it has never been so easy to install space-saving stairs.

Significant time savings and ease of installation thanks to bearing bracket, connection profile, mounting eyes and optional clamping rail.



New
ease of
installation

Professional installation package

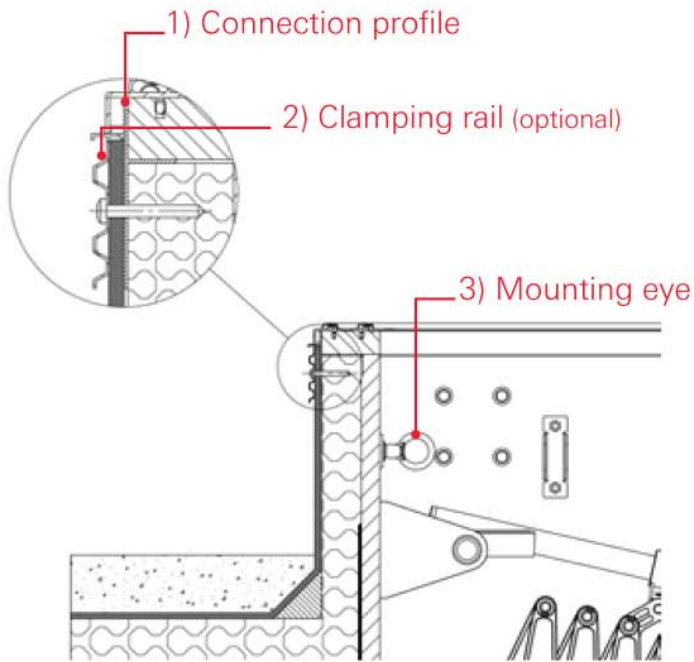
Included as standard with all wooden hatches

- + Bearing bracket
- + Installation gauge
- + Connection profile (already fitted)
- + Mounting eyes (already fitted)
- + Step wedges
- + Screws

Optional:

- + For clamping rail, see page 79.





1) Connection profile

2) Clamping rail (optional)

3) Mounting eye



4) Installation gauge



5) Step wedge



6) Bearing bracket

1) Connection profile

Facilitates professional insulation and sealing of the space-saving stairs.

2) Clamping rail (optional)

Facilitates swift and secure attachment of the roof membrane.

3) Mounting eye

Simplifies the process of lifting the space-saving stairs into the rough opening by crane.

4) Installation gauge

Conveys the thickness of the ceiling quickly and reliably.

5) Step wedge

For aligning the space-saving stairs accurately before they are attached to the structure.

6) Bearing bracket

Simplifies the process of lowering the space-saving stairs to the correct height in the ceiling opening.

33) Clamping rail (optional)

- Customised to specific requirements in the factory
- For attaching the roof membrane

