

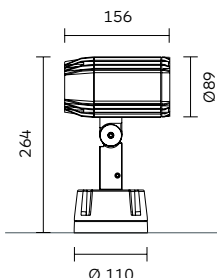


## Bullet



### Bullet 89

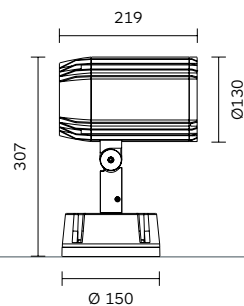
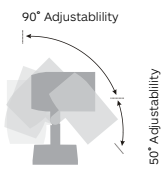
Floodlight



Extendable pole available for all the range.

### Bullet 130

Floodlight



Code ordering example: **3 4 9 8 B B 1 2 - 8 0 3 0 1 4 D 0 1 0**

	Product code	Light source code*	Bridgelux	COB	>CRI	CCT**	LED Power	Nominal Lumen	Beam angle (BA°)	Driver Options	Finish
Bullet 89	<b>3498</b>	<b>BB12</b>			<b>80</b>	<b>30</b> 3000K	14W	2152 lm	<b>14/22/32</b>	<b>D0</b> No Dim	<b>10</b> ■ Black
						<b>40</b> 4000K		2220 lm		<b>DX</b> DMX	<b>29</b> ■ Grey (Outdoor)
Bullet 130	<b>3496</b>	<b>BB13</b>					20W	3067 lm	<b>16/28/40</b>	<b>DA</b> Dali Dim	
								3170 lm		<b>D1</b> 0-10 Dim	
										<b>DP</b> Phase	
										<b>DC</b> CASAMBI	

### Notes:

\* For complete code ordering information, please see page 377.

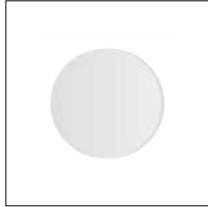
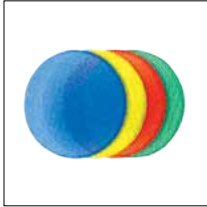
\*\* For other CCT options, please contact us.

For related accessories, please see page 327.





# Accessories



Product / Accessories	Coloured Filters Colours 25, 42, 55, 85	Linear Spread Colour 41	Visor Colours 10	Spike Colour 10
<b>Bullet 89</b>	<b>2607</b>	<b>2608</b>	<b>2328</b>	<b>2330 / 2322</b>
<b>Bullet 130</b>	<b>2610*</b>	<b>2609</b>	<b>2329</b>	<b>2330</b>

In plastic.  
 • H: 235 for code 2330.  
 • H: 230 for code 2322.  
 The 50 mm upper part must stay above ground level according to standards.

**Notes:**

\* Available only for white colour version.  
 For complete code ordering information, please see page 377.

